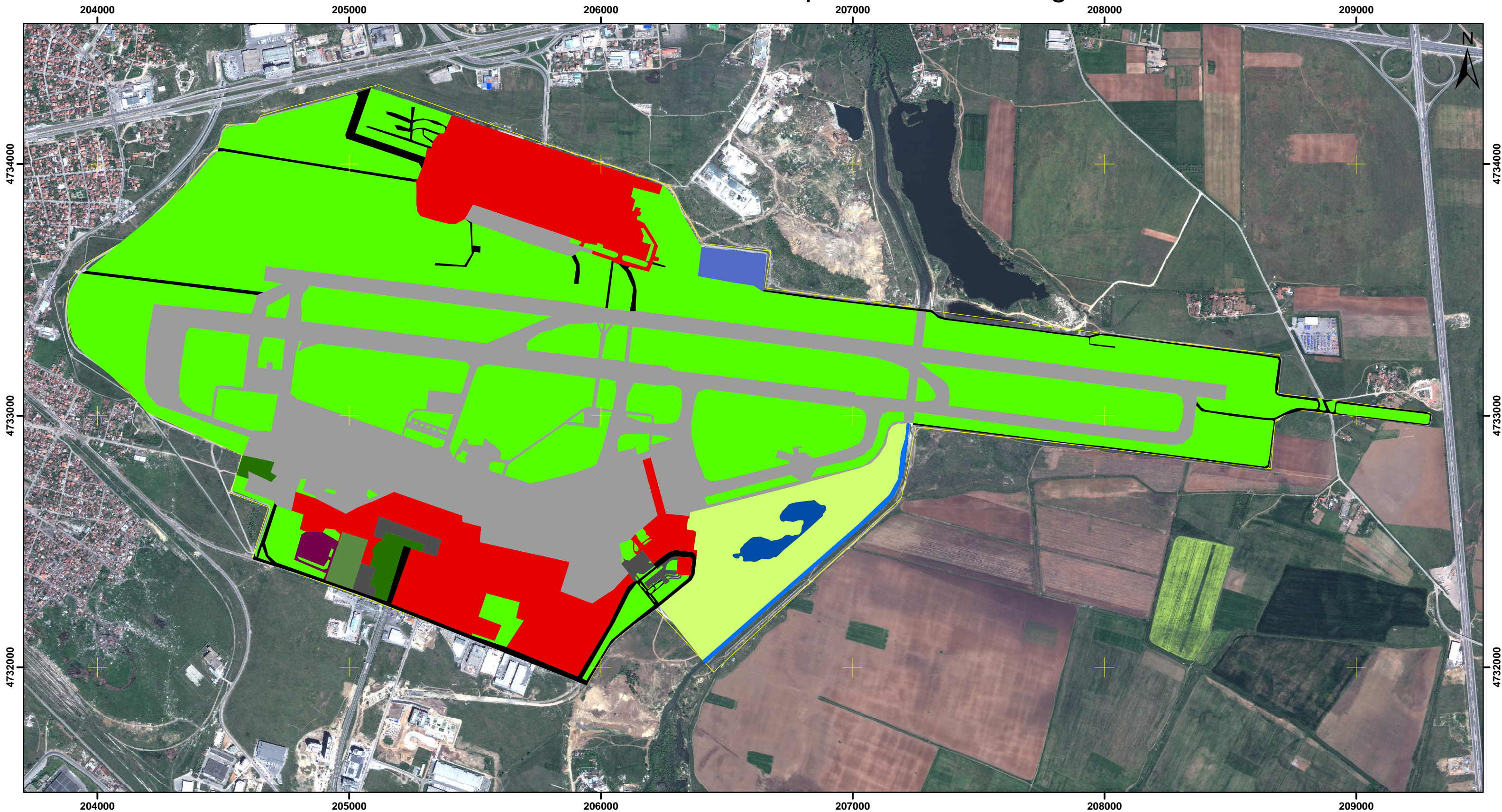


Land cover data from the Sofia airport area according LCSS



Legend

Land cover

Class - LCSS code - Area (ha)

■ Mixed class dominated by buildings > 70% - A4-A12A15 - 69.16 ha

■ Buildings and metal tanks > 70% - Industrial use - A4-A12 - 1.79 ha

■ Bare areas - A5 - 3.31 ha

■ Green urban areas with buildings < 50% - Sport and leisure facilities - A1-A38 - 2.28 ha

■ Green urban - Airport Park - A6 - 30.12 ha

■ Trees - A1 - 3.55 ha

■ Grassland - A6A13 - 295.75 ha

■ River - A1-A4 - 2.14 ha

■ Water body - B27 - 2.93 ha

■ Asphalt layer - Parking - A1-A41 - 3.65 ha

■ Asphalt layer - Roads - A3-A7 - 14.3 ha

■ Reinforced concrete/asfalt - Airport runway- A1-A21 - 142.24 ha

□ Boundaries of Airport Sofia

Reference Projection:
Projection: UTM Zone 35 N
Spheroid: WGS 84
Datum: WGS 84

Vectors
© ReSAC - 2012
Airport Borders
Land cover

Imagery
GeoEye image
©GeoEye 2010 Telespazio SpA
Acquisition Date - 2010-05-01

